



HITACHI
Inspire the Next

Hitachi VeinID technology: H-1 Finger Vein Scanner

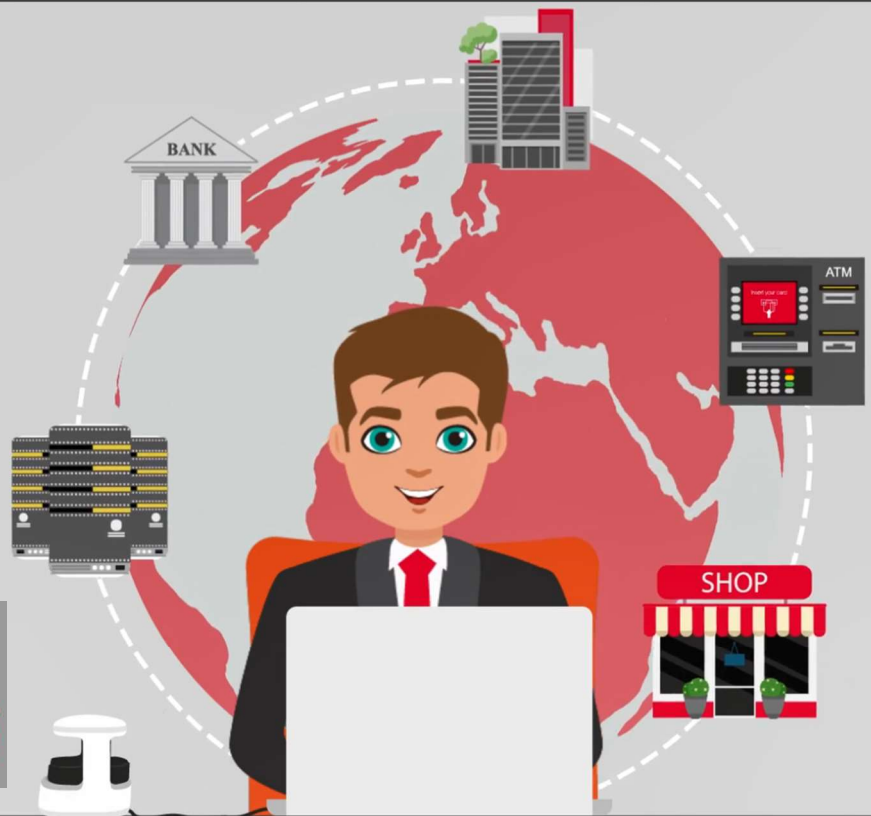
50 years of passwords, time to wave goodbye

Being used

by some of the

**world's largest
companies**

for secure authentication



Simple and
easy to **use**



Easy
integration



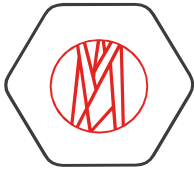
A great **user
experience**

digitalsecurity.hitachi.eu

Product Benefits



Finger Vein is **an internal biometric** and it is not easily stolen or easy to replicate. This pattern remains stable over many years.



Finger Vein **does not rely on the skin pattern**, so it is resilient against the rough, dry skin or surface features.

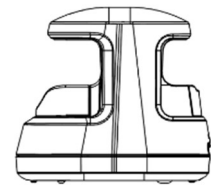


No biometric image is stored in the system so there is no chance of biometric reuse or theft of users biometric.



Templates are **encrypted using AES 256** and transmitted using secure communication protocols.

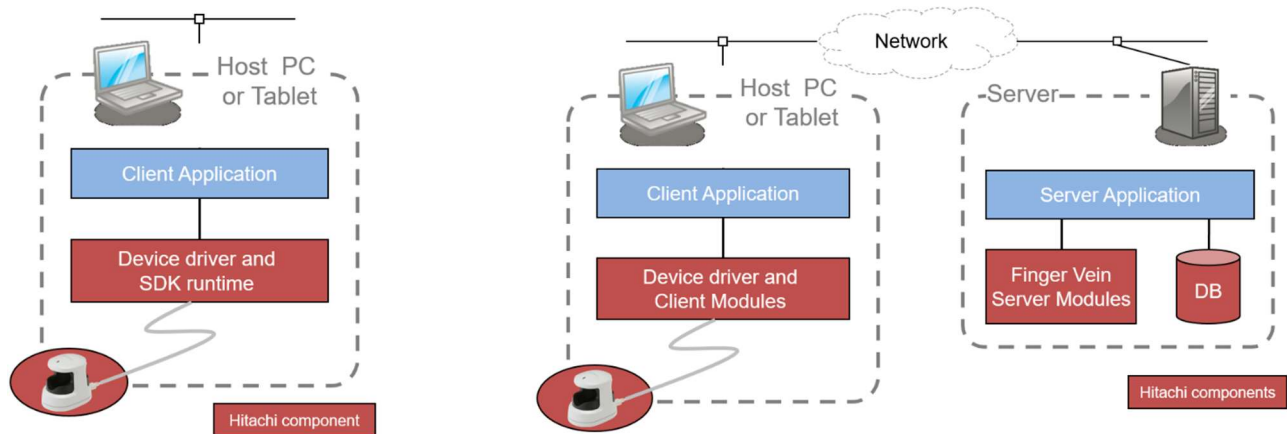
Product Specifications



Model Number	: PC-KCA110
Connectivity	: USB 2.0 for power and data
Image Capture	: Near infrared LED with CMOS sensor
Authentication Time (1:1 matching)	: Less than 2 seconds
Operating Conditions (Lighting)	: under 4,000 Lx / avoid direct sunlight
Operating Conditions (Temp)	: 5 to 35 °C
Operating Conditions (Humidity)	: 20-80% (non-condensing)
Power	: DC 5.0V +/- 5% <500 mA (via USB)
Size (H x W x D)	: 59 x 82 x 74 mm
Weight (g)	: 96g (without USB cable)
User Interface Features	: Coloured LED, Buzzer
Standards	: FCC Part 15B, ICES, CE, RoHS, REACH, WEEE
Physical Security	: Kensington Slot
Supported Client OS	: Windows 11 and Windows 10 Pro and Enterprise editions

Solution Integration

Hitachi H-1 scanner SDKs provide a number of options for developers and system integrators to build biometric authentication into existing systems or new applications. Hitachi's biometric authentication technology can be integrated using either the BioAPI-based SDK or a server authentication engine for high speed one-to-many identification matching.



Standalone system with match-on-host PC

Server based matching using optional server engine

FURTHER INFORMATION

Please contact Hitachi Europe Limited for further information about Hitachi's finger vein technology, applications, and devices.

Hitachi Europe Limited's prior written consent is required before any part of this document is reproduced.

© 2022 Hitachi Europe Limited. All copyrights and intellectual property rights are owned by and reserved by Hitachi Europe Limited and its subsidiaries.