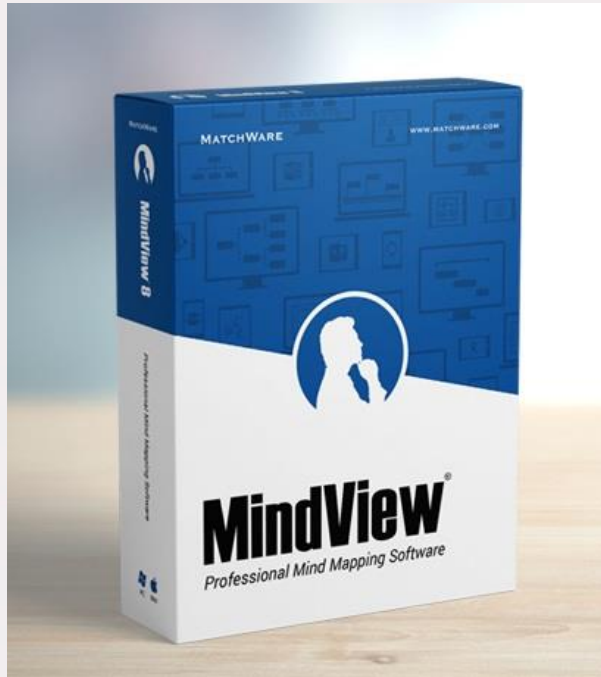


MindView AT Suite – 3 year subscription



MindView AT has been designed to help visual thinkers create impressive written assignments and presentations. The smooth transition from a Mind-Map to Word and PowerPoint means students can make powerful, formatted documents ready for assessment.

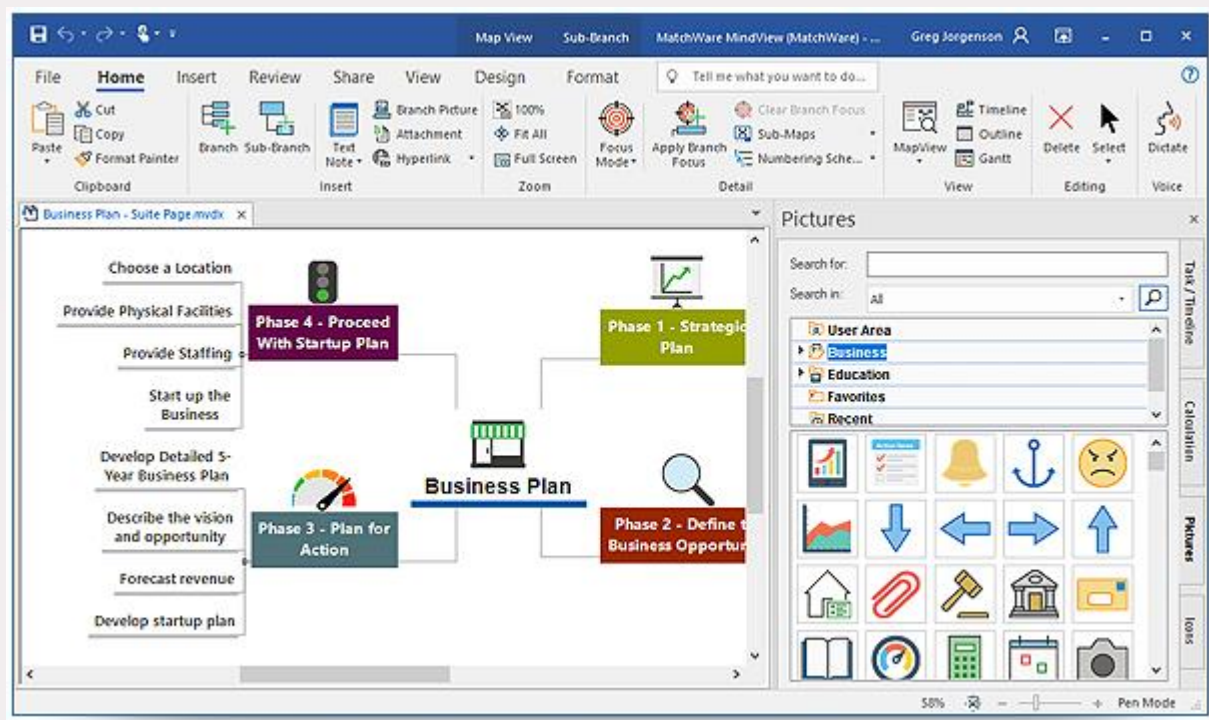
The added assistive technology software functionality, including text-to-speech, Dragon integration, predictive text, and audio notes make MindView AT the industry leader in mind mapping for assistive purposes.

The MindView AT Suite Subscription Includes:

- Access to all MindView applications; Windows, Mac and MindView Online
- Unlimited installations for a single user
- Use of the MindView Drive, for cloud storage and multi-user collaboration
- Upgrades to latest applications

Brainstorm and Present with MindView

Improve your meetings by utilising the Mind Mapping technique. Use Mind Maps to easily capture ideas and concepts, attach unlimited number of documents, link to SharePoint, Google Drive, Dropbox etc.



Convert Your Mind Map To Other Documents

The professionally designed Word, PowerPoint and Excel templates allow you to export your mind-maps into a polished document with just a single click. You can add pictures, videos, take notes or add links to SharePoint, OneDrive and Google Drive to your Mind Map and everything will be included in your export.

Using Mind Mapping for Project Management

Whether you are looking to create a simple "to do list", a project timeline, a Work Breakdown Structure, or a Gantt Chart, MindView has got you covered.

True Multi-Platform Mind Mapping Solutions

With access to MindView Desktop (Windows/Mac), MindView Online and MindView Drive you will be able to get to your documents from wherever you are, at work, at home, and "on the go" on any device needed

Sharing Documents and Access Control

Once you have saved your document in MindView Drive, you can select users to share your file with and determine access, enabling project managers to optimize projects involving people from various locations.

Popular Mind Mapping Features

Sub-Maps

Create sub-maps by "detaching" branches and their sub-branches in different tabs, similar to the sheets of an Excel workbook.

Calculation and Data

You can add numbers and equations on branches and roll-up data to the root. Export to Excel or visualise on a mind map.

Cloud Integration

MindView integrates with MS SharePoint, MS OneDrive and Google Drive and allows you to save and hyperlink directly from your mind map.

Capture Tool

Use the Capture tool to "snip" text and images from websites and documents. The capture tool will even cite the source and transfer that information to your bibliography.

Dictate

Use the Dictate feature to dictate text into either branch or text notes. Simply go through the "Speech Recognition" in Windows to optimize your speaking and start.